
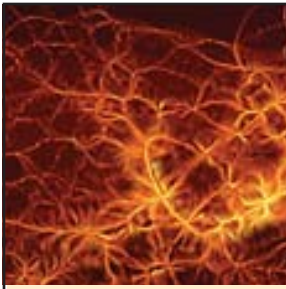


# Wisconsin Cyberinfrastructure Day

By and for the research institutions of Southeast  
Wisconsin and the University of Wisconsin System



November 5, 2010



## **Sponsoring Organizations**

BloodCenter of Wisconsin

Clinical and Translational Science Institute of Southeast Wisconsin

Internet2

Marquette University

Medical College of Wisconsin

Milwaukee Institute

Milwaukee School of Engineering

National Science Foundation

Southeast Wisconsin High Performance Cyberinfrastructure

University of Wisconsin-Madison

University of Wisconsin-Milwaukee

University of Wisconsin System Administration  
Office of Learning and Information Technology

WiscNet

## Logistics

Friday, November 5, 2010

8:00 – 4:30

Website: [wisconsin.cidays.org](http://wisconsin.cidays.org)

Live Videostream: [bit.ly/dvVHp5](http://bit.ly/dvVHp5)

Submit questions or request follow-up: [wi-ci@uwm.edu](mailto:wi-ci@uwm.edu)

Twitter: [@wiciday](https://twitter.com/wiciday)

Hashtag: [#wiciday](https://twitter.com/hashtag/wiciday)

Facebook: [www.facebook.com/wiciday](http://www.facebook.com/wiciday)

UW-Milwaukee Wireless Network

Userid: [wiciday](#)

Password: [i2-NSF-UWS](#)

Conference evaluation form: [bit.ly/9F1Fl4](http://bit.ly/9F1Fl4)

Post event resources: [wisconsin.cidays.org](http://wisconsin.cidays.org)

## Venues

### In-person

UWM Golda Meir Library 4th Floor Conference Center  
2311 E. Hartford Avenue, 53211

Internet Stream of Plenary Sessions: [bit.ly/dvVHp5](http://bit.ly/dvVHp5)

### Group Viewing of Internet Stream of Plenary Sessions

UW-Eau Claire: Old Library 1132

UW-La Crosse: Wing Technology Center 163

UW-Madison: Pyle Center

## UW-Milwaukee Venue

### Lodging

[wisconsin.cidays.org](http://wisconsin.cidays.org) Visit “Registration and Logistics”

### Campus Map

See annotated map in this document or [uwm.edu/map](http://uwm.edu/map)

### Driving Directions and Parking

[www4.uwm.edu/map/vt-drive.cfm](http://www4.uwm.edu/map/vt-drive.cfm)

From I-43 or I-94 near downtown Milwaukee, take I-794 east to Lakefront exit. Proceed 3 miles north along the lake on Lincoln Memorial Dr. to the top of the hill, where Lincoln Memorial Dr. becomes E. Kenwood Blvd. and intersects with N. Lake Dr. Proceed straight West several blocks on Kenwood Blvd to the Union parking structure at 2200 E. Kenwood Blvd. Parking fee is \$1.25/hour cash.

# Agenda

Friday, November 5, 2010

## Library 4th Floor Conference Center & Videostream

8:00	<b>Coffee and Registration</b>
8:30	Interim Provost <b>Johannes Britz</b> , UW-Milwaukee
8:45	<b>Kevin Eliceiri</b> , Director of Laboratory for Optical and Computational Instrumentation, UW-Madison <i>Biological Image Informatics: Challenges and Opportunities</i>
9:30	<b>Colleen Ludwig</b> , Assistant Professor, Peck School of the Arts, UW-Milwaukee <i>Creating Technology + Poetry: Making New Media Art</i>
10:15	Break
10:30	<b>Howard Jacob</b> , Professor and Vice Chair of Research in Pediatrics, Medical College of Wisconsin <i>Personalized Medicine &amp; Big Data</i>
11:15	<b>Patrick Brady</b> , Professor of Physics, UW-Milwaukee <i>Enabling Gravitational-wave Astronomy on the LIGO Data Grid</i>
Noon	<b>Lunch Discussion Tables</b> No cost. Registration required by November 1 at: <a href="http://wisconsin.cidays.org">wisconsin.cidays.org</a>

## Library 4th Floor & Videostream

## Library E281

1:00	<b>David Armstrong</b> , Assistant Professor of Political Science, UW-Milwaukee <i>Taking Full Advantage of Political Science Data through Cluster Computing</i>	<b>Russ Hobby</b> , Program Manager, Internet2 <i>What's under the Cyberinfrastructure Hood?</i>
		<b>Shaun Abshire</b> , Associate Director, WiscNet <i>Networking for Wisconsin Scientists and Scholars: Engaging with WiscNet</i>
1:45	<b>David Woods</b> , Transana Lead Developer, UW-Madison <i>Transcription &amp; Analysis of Audio &amp; Video Data</i>	<b>Craig Struble</b> , Associate Professor of Computer Science, Marquette University <i>SeWHIP Cyberinfrastructure</i>
2:30	Break	
2:45	<b>Mike Stumpf</b> , Undergraduate, UW-Madison <i>Digital Inquiry: Quantitative Means for Qualitative Ends</i>	<b>Elizabeth Leake</b> , External Relations Coordinator & <b>Dan Katz</b> , Senior Computational Researcher, TeraGrid <i>NSF TeraGrid Computing and Data Resources for Investigators</i>
3:30	<b>Dorothea Salo</b> , Research Services Librarian and adjunct faculty in School of Library and Information Studies, UW-Madison & <b>Brad Houston</b> , University Records Officer, UW-Milwaukee <i>NSF Data Management Requirements</i>	<b>Greg Thain</b> , Systems Programmer, Condor <i>High Throughput Computing from the Desktop to the Open Science Grid</i>

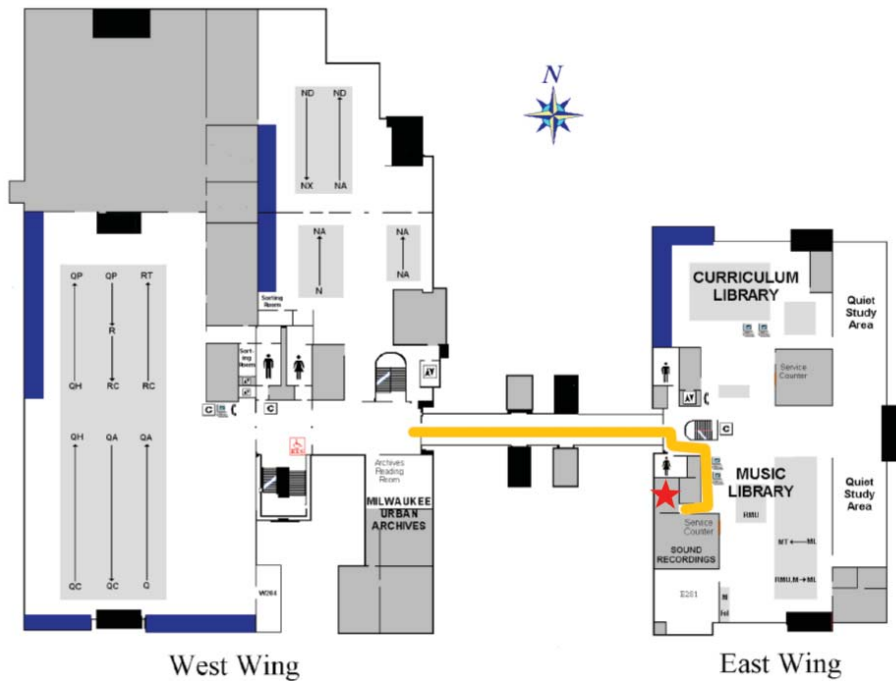
## Library 4th Floor & Videostream

4:15	<b>Steve Hahn</b> , Interim CIO of the Graduate School, UW-Madison <i>Wrap-Up</i>
------	--

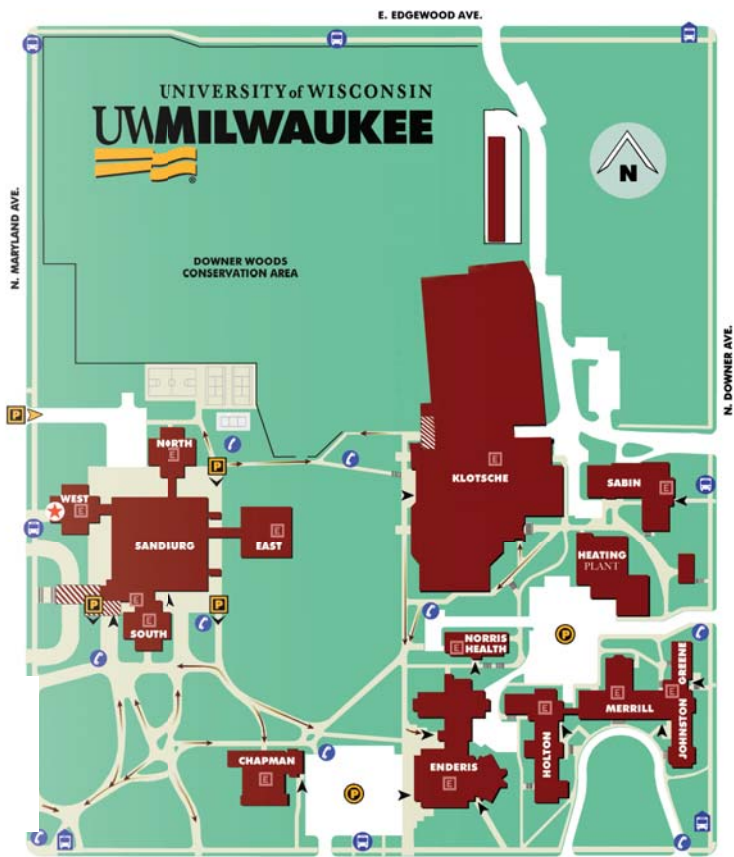
Registration, plenary sessions and lunch are in the  
**4th Floor Library Conference Center**



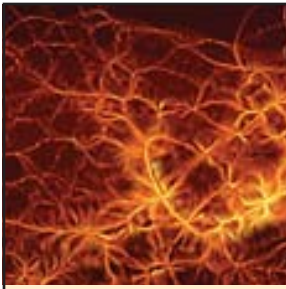
Technical Breakout Sessions are in **Room East 281**  
(two floors below and across the bridge from the Fourth Floor Conference Center)



**Golda Meir Library – 2nd Floor**



- Emergency Phone
- Public Parking
- Staff Parking 7am-3pm  
(Public Parking after 3 pm)
- Stairs to Parking Below
- Entrance to Underground Parking
- UPark Lot
- Ground Level Power-Assisted Entrance
- Bus Stop
- Bus Shelter
- Elevator
- Stairs
- Steep Walkways with Long Stretches, Cross Slopes or No Railings  
(arrow direction indicates uphill)
- Covered Walkway
- UWM University Police



## **Program Committee**

### **BloodCenter of Wisconsin**

Rodeina Davis

### **Marquette University**

Craig Struble

### **Medical College of Wisconsin**

Simon Twigger

### **Milwaukee Institute**

Jay Bayne

### **Milwaukee School of Engineering**

Chris Taylor

### **UW-Madison**

Paula Gates

Steve Hahn

Laura Heisler

Sangtae Kim

Ron Kraemer

Brian Rust

Dorothea Salo

Todd Tannenbaum

Terry Millar

### **UW-Milwaukee**

Bruce Maas

David Stack

Melissa Woo

## **Planning Team**

### **Marquette University**

Craig Struble

### **Medical College of Wisconsin**

Simon Twigger

### **UW-Madison**

Paula Gates

Steve Hahn

Steve Krogull

Hideko Mills

Brian Rust

Dorothea Salo

### **UW-Milwaukee**

David Stack

Melissa Woo

### **WiscNet**

Shaun Abshere

John Pederson